



Health and Equity in All Policies Alliance

Special Announcement

[Legacy Community Alliance for Health](#) (LCAH) and [Mobilizing Action Toward Community Health](#) (MATCH) group at UW Population Health Institute are pleased to share this first jointly published newsletter featuring content on health equity and health in all policies relevant to Wisconsin communities. Please don't hesitate to contact us with comments or if you have ideas for content you'd like to see!

Health & Equity in All Policies Alliance WEBINAR (HEAPA)

**Health in All
Policies in Rural
Communities
February 25
1:00pm - 2:15pm**

Join Zoom Meeting

<https://zoom.us/j/323429332>

Meeting ID: 323 429 332

Dial by your location

+1 646 558 8656 US (New York)

+1 669 900 6833 US (San Jose)

Meeting ID: 323 429 332

Find your local number:

<https://zoom.us/u/afxplY1H6>

Join us for our bi-monthly HEAPA webinar series. On February 25, [Lisa Charron](#) will lead a presentation and discussion about Health in All Policies in rural communities.

Lisa's presentation will address barriers and best practices found in the literature, share case stories from the [Legacy Community Alliance for Health](#), and invite participants to discuss experiences implementing health equity work in rural communities. This will be an opportunity to develop a better understanding of how we can move Health in All Policies forward in rural Wisconsin.



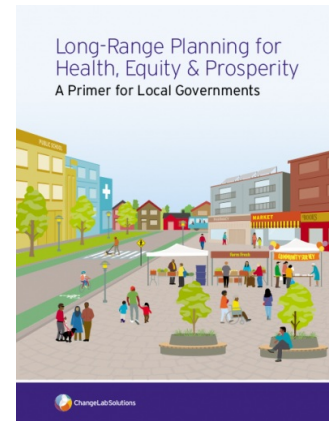
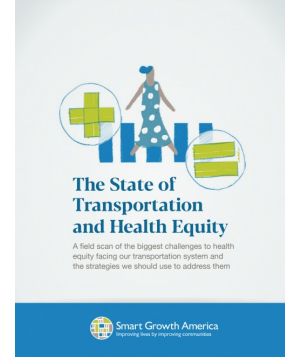
News and Resources on Health and Equity

[The State of Transportation and Health Equity](#)

identifies the biggest challenges to health equity facing our transportation system and the best tools to address the problem. Developed through rigorous feedback from a panel of health and transportation experts from across the country, each of the six sections outlines challenges, corresponding strategies, as well as success stories from all different types of

places. This report was published by [Smart Growth America](#).

[Long-Range Planning for Health, Equity & Prosperity: A Primer for Local Governments](#) is designed to support planners, local leaders, and community advocates with the information they need to prioritize health and equity in their planning work. This guide was published by [ChangeLab Solutions](#).



Learning Opportunity

Webinar - Walkability for All: Putting Equity into Practice - Wednesday, Feb. 12, 2020 at 1 pm CT - [America Walks](#) is hosting a webinar to highlight ways to create equitable communities through walkability, More info and registration [here](#).

Funding/Support Opportunities

The [Wisconsin Tobacco Prevention and Control Program](#) (TCP), part of the Wisconsin Department of Health Services, released a [Request for Applications \(RFA\) for community-based tobacco prevention and control interventions](#). The RFA focuses on reducing tobacco's burden in Wisconsin by eliminating tobacco-related health disparities and advancing health equity in the state. Different levels of funding are available and more information can be found in the [full RFA document](#). Funding applications are due February 28, 2020.

The [Wisconsin Department of Health Services \(DHS\)](#) has released the Overdose Data to Action Community Prevention Request for Applications (RFA). This opportunity is funded by the CDC and aims to strengthen and enhance the capacity of communities by promoting strategies and activities that build local capacity to prevent morbidity and mortality associated with opioid overdoses. More information can be found in the full RFA document [here](#). Letters of intent (optional) are due February 3, 2020 with full applications due on March 3, 2020.

The Wisconsin Health and Equity in All Policies Alliance newsletter is published by 1000 Friends of Wisconsin and brought to you by COWS and MATCH at UW-Madison, with special thanks to our partners and collaborators at the Wisconsin League of Municipalities and the Wisconsin Counties Association.



If you have questions or would like more information, contact Katya Spear at knspear@cows.org